

Year Constructed:

2001

Facility Condition:

FAIR

Aggregated Average

Grade:

3.6 /6

IEQ Grade

4.2 /6

Current Site Acreage:

17.2 acres

ISBE Guideline Acreage:

8.15 acres

Site  
Tolerance:



Classroom  
Section  
Tolerance:



Collab/  
Hands-On  
Tolerance



Note: Maintenance cycles are cyclical and continually repeat throughout the life of the building.

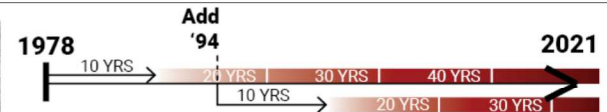
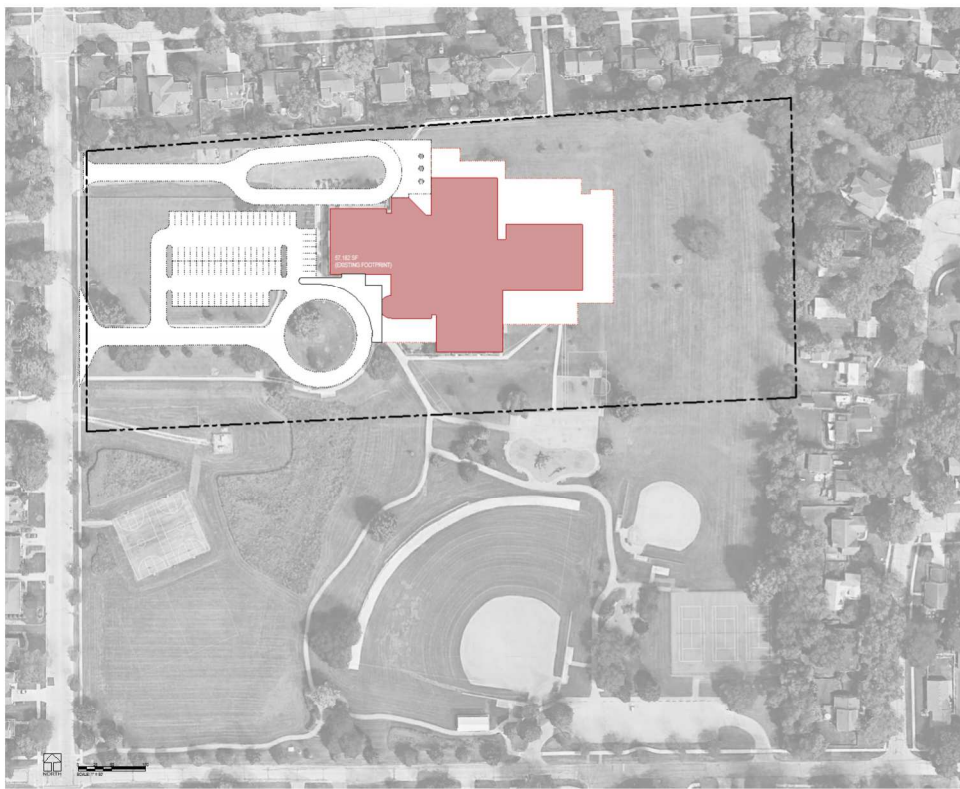
Current Sections Existing:

3 Sections

Projected Enrollment Sections  
included in Concepts:

2 Sections

GMS



Year Constructed:

1978

Facility Condition:

POOR

Aggregated Average Grade:

3.4 /6

IEQ Grade

4.2 /6

Current Site Acreage:

9.1 acres

ISBE Guideline Acreage:

8.83 acres

Site  
Tolerance:



Classroom  
Section  
Tolerance:



Collab/  
Hands-On  
Tolerance



Note: Maintenance cycles are cyclical and continually repeat throughout the life of the building.

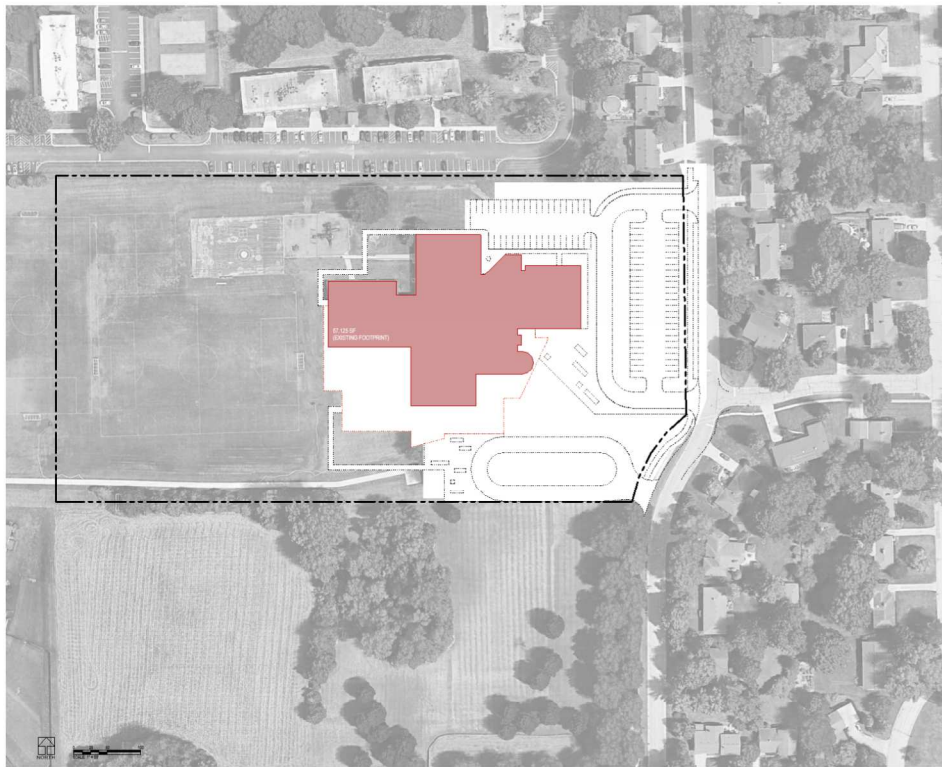
Current Sections Existing:

3 Sections

Projected Enrollment Sections  
included in Concepts:

4 Sections

LWS



Year  
Constructed:

Facility Condition:

**POOR**

Aggregated Average Grade:

**3.1 / 6**

IEQ Grade

**3.6 / 6**

Current Site Acreage:

**12.3 acres**

ISBE Guideline Acreage:

**8.81 acres**

Site  
Tolerance:



Classroom  
Section  
Tolerance:



Collab/  
Hands-On  
Tolerance

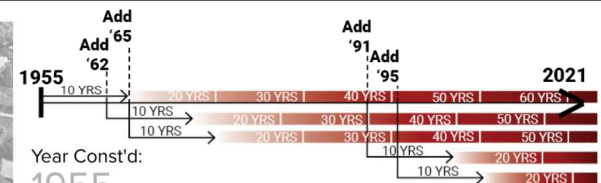
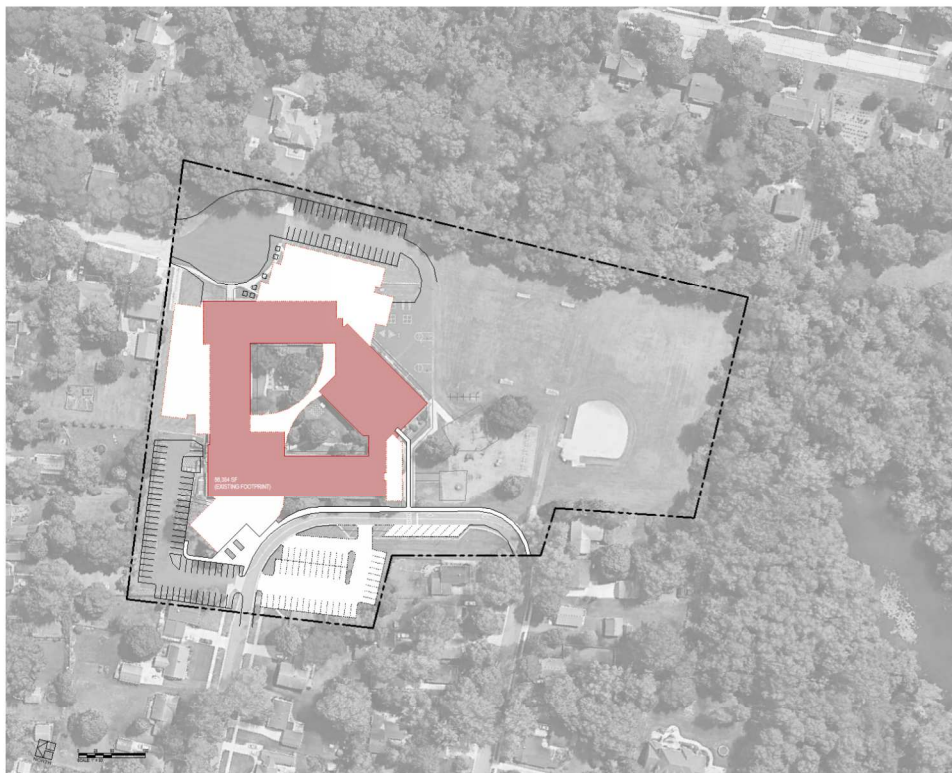


Note: Maintenance cycles are cyclical and continually repeat throughout the life of the building.

Current Sections Existing:  
**3 Sections**

Projected Enrollment Sections  
included in Concepts:  
**3 Sections**

# HCS



Year Const'd:  
**1955**

Facility Condition:

**POOR**

Aggregated Average Grade:

**3.7 / 6**

IEQ Grade

**4.0 / 6**

Current Site Acreage:

**8.8 acres**

ISBE Guideline Acreage:

**8.95 acres**

Site  
Tolerance:



Classroom  
Section  
Tolerance:



Collab/  
Hands-On  
Tolerance



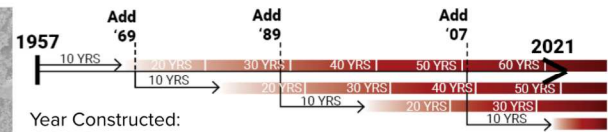
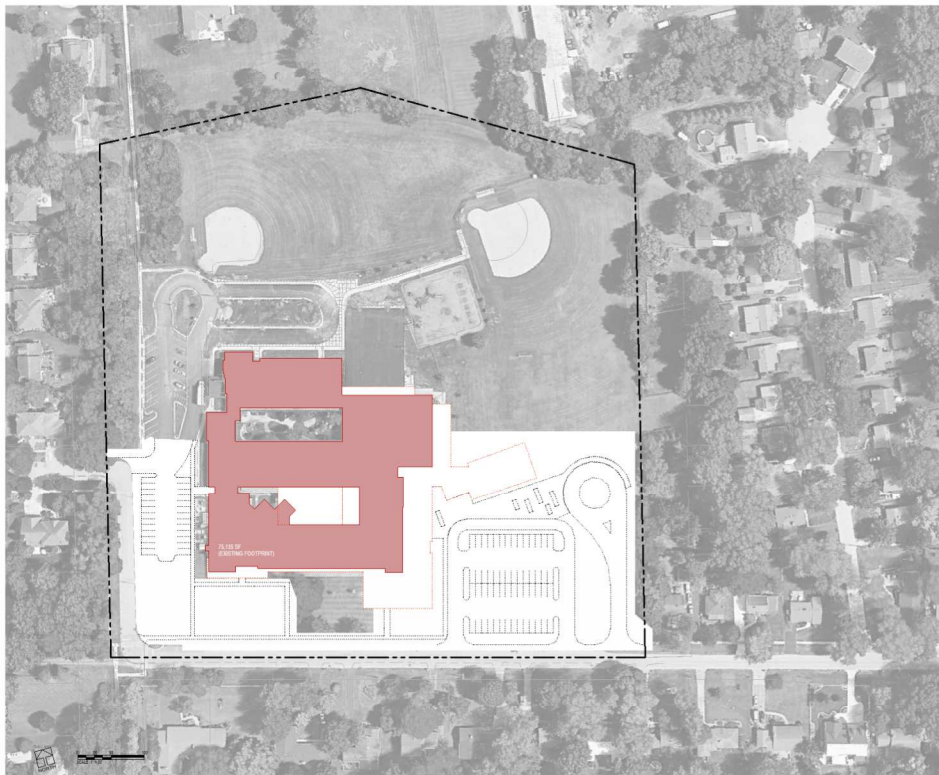
Note: Maintenance cycles are cyclical and continually repeat throughout the life of the building.

Current Sections Existing:  
**3 Sections**

Projected Enrollment Sections  
included in Concepts:

**4 Sections**

# JBN



Year Constructed:

1957

Facility Condition:

FAIR

Aggregated Average Grade:

3.5 /6

IEQ Grade

4.2 /6

Current Site Acreage:

13.3 acres

ISBE Guideline Acreage:

10.76 acres

Site  
Tolerance:



Classroom  
Section  
Tolerance:



Collab/  
Hands-On  
Tolerance



Note: Maintenance cycles are cyclical and continually repeat throughout the life of the building.

Current Sections Existing:

3 Sections

Projected Enrollment Sections  
included in Concepts:

4 Sections

AGS



Year Constructed:

2001

Facility Condition:

FAIR

Aggregated Average Grade:

3.7 /6

IEQ Grade

4.1 /6

Current Site Acreage:

7.3 acres

ISBE Guideline Acreage:

8.46 acres

Site  
Tolerance:



Classroom  
Section  
Tolerance:



Collab/  
Hands-On  
Tolerance



Note: Maintenance cycles are cyclical and continually repeat throughout the life of the building.

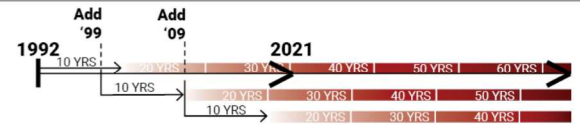
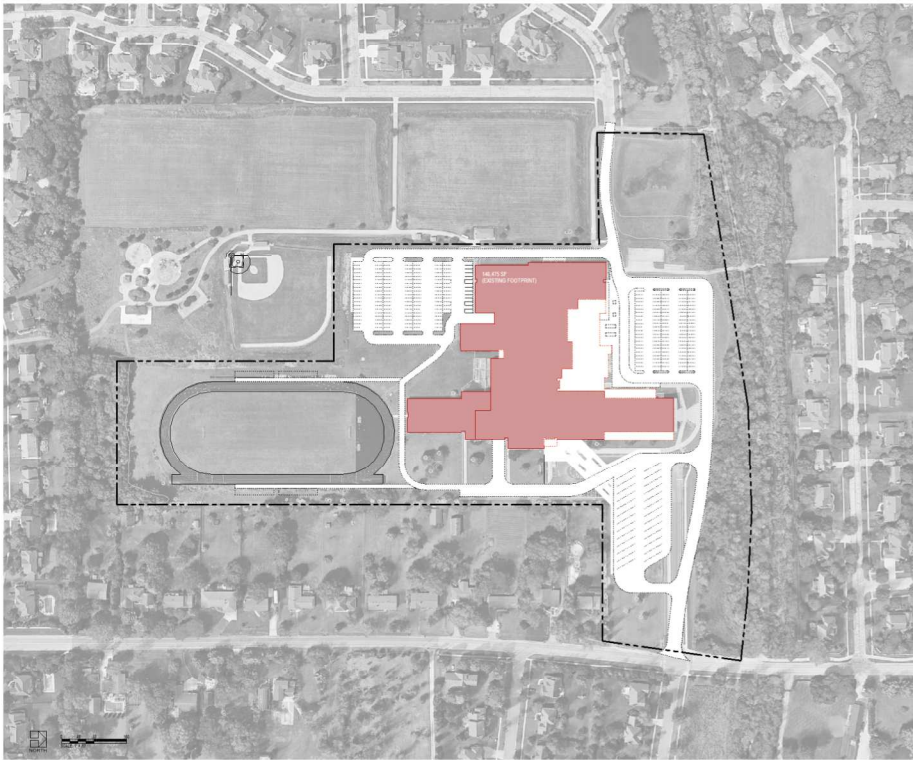
Current Sections Existing:

3 Sections

Projected Enrollment Sections  
included in Concepts:

3 Sections

HWS



Year Constructed:

1992

Facility Condition:

**FAIR**

Aggregated Average Grade:

3.4 / 6

IEQ Grade

3.9 / 6

Current Site Acreage:

**23.6 acres**

ISBE Guideline Acreage:

**28.29 acres**

Site  
Tolerance:



Classroom  
Section  
Tolerance:



Collab/  
Hands-On  
Tolerance



Note: Maintenance cycles are cyclical and continually repeat throughout the life of the building.

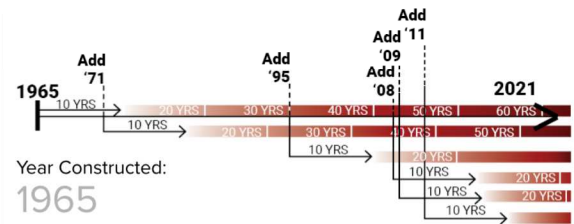
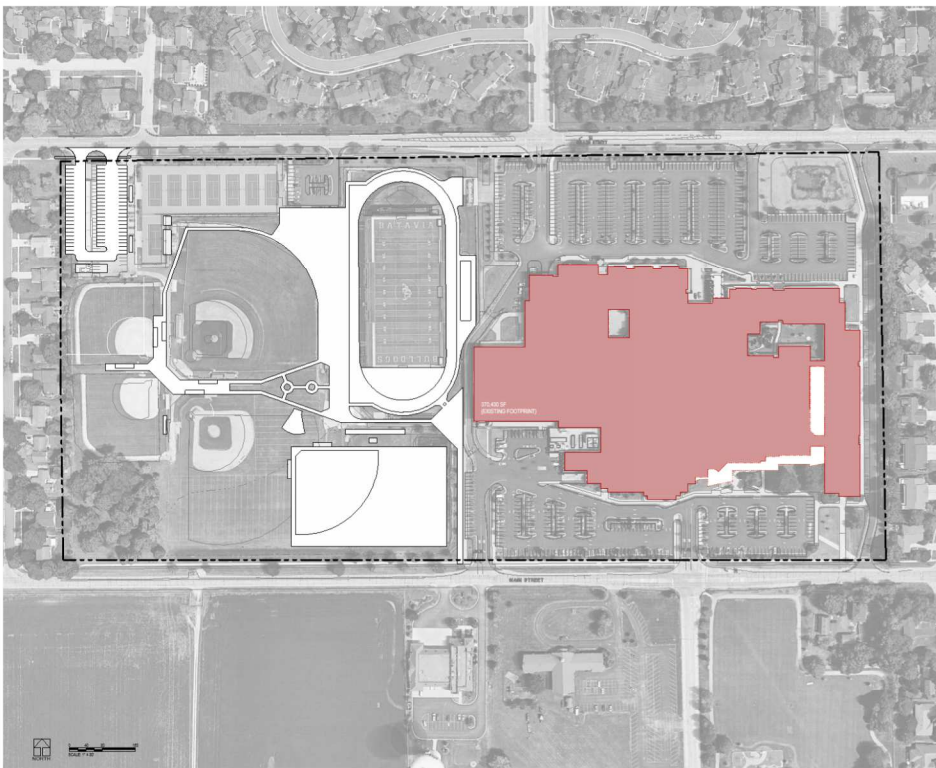
2019 Student Count Existing:

1293

Projected Student Count Change  
in Concepts:

**-152**

**RMS**



Year Constructed:

1965

Facility Condition:

**FAIR**

Aggregated Average Grade:

3.5 / 6

IEQ Grade

3.9 / 6

Current Site Acreage:

**44 acres**

ISBE Guideline Acreage:

**39.26 acres**

Site  
Tolerance:



Classroom  
Section  
Tolerance:



Collab/  
Hands-On  
Tolerance



Note: Maintenance cycles are cyclical and continually repeat throughout the life of the building.

2019 Student Count Existing:

1933

Projected Student Count Change  
in Concepts:

**-268**

**BHS**