

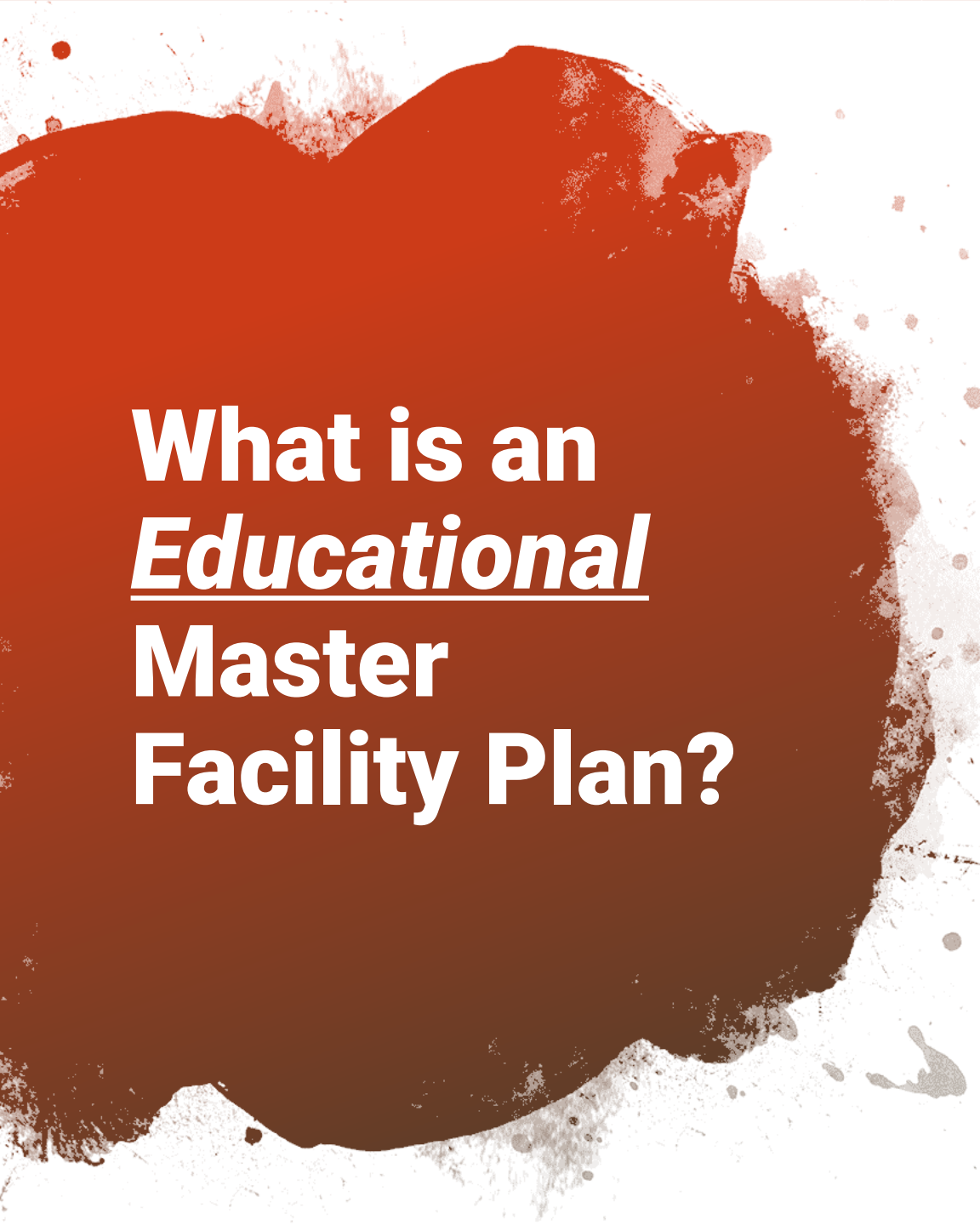


**Building Our Future  
TOGETHER**



# **Board Update: Educational Master Facility Plan - Phase 2**

September 24, 2019



# What is an *Educational* Master Facility Plan?

- **Traditional Master Facility Plans** examine the components of a building, it's structure, systems and condition.
- An **Educational Master Facility Plan** also examines the **educational adequacy** (today) and **educational readiness** (in the future) of your schools to **meet your vision**, so you can ensure **lasting value to the community, teachers and students**.
- The goal is to align the form to its function.



# EMFP Process



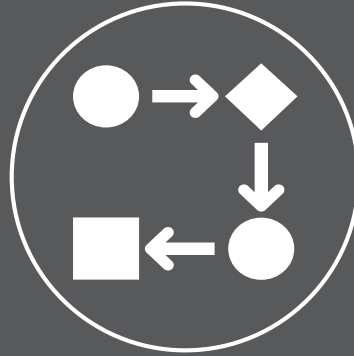
## Phase 1: Deeper Understanding

- What's happening in the District now?
- What is the foundation for success?



## Phase 2: Discover + Explore

- How is the District growing?
- What is possible?



## Phase 3: Program

- How can buildings support teaching and learning?
- What resources does the District need?



## Phase 4: Conceptualize

- How might this be created?
- What priorities and costs are there?



## Phase 5: Game Plan

- What should be recommended to the Board?

September – December 2019

Community Meetings:  
Phase 1 Findings

Community Meeting:  
Global Perspectives

Community Open Houses:  
Options

Community Open Houses:  
Options

# Phase 2 – Activities

- ✓ VALUES Workshop –  
September 4, 2019
- ✓ Curriculum & Instruction Workshops –  
September 11 & 13, 2019
- ✓ Student Ideation Workshop –  
September 13, 2019
- ✓ Core Team Kickoff –  
September 24, 2019
- ▶ **Global Perspectives  
(Community Open House) –  
September 26, 2019**
- ▶ **Core Team Meetings –  
TBD Fall 2019**
  - Local/Regional Tours





**Building Our Future  
TOGETHER**



# **VALUES Workshop**

September 4, 2019



# What does sustainability mean to you?







# VALUES: "Headlines" Activity

WEDNESDAY, SEPTEMBER 4, 2029 • \$2.00

## KANE COUNTY CHRONICLE

SERVING THE TRI-CITIES AND KANELAND SINCE 1881

KCChronicle.com

First Zero-Energy K-12 School Opens in Batavia

Insert Headline Here



Draw Photo Here

- 1/2 the operating cost of existing schools.

Insert Sub-Heading Here



Benefits of Our New School

- Sustainable - ~~at~~ Zero Net Energy Use through Low loss Roof/Walls
- Food Waste - Recycling of Cafeteria Waste → Composting Facility
- Hiking & Biking Paths are connected to Batavia Bike Paths
- Fast Charging Stations are free to staff and parents

Insert Bold Ideas Here

No new taxes are needed to staff and maintain the new school  
Excess power is sold back to provider  
Solar Renewable Energy Credits are sold for offsetting capital costs.

Draw Photo Here

WEDNESDAY, SEPTEMBER 4, 2029 • \$2.00

## KANE COUNTY CHRONICLE

SERVING THE TRI-CITIES AND KANELAND SINCE 1881

KCChronicle.com

LAST GASOLINE CAR LEAVES ROAD BASED (IN BATAVIA)

Insert Headline Here



THE NEXT STEP TOWARDS CARBON NEUTRALITY?

Insert Sub-Heading Here



Becca m

new charging ports available for student parking  
+ parts necessary in all lots  
• plant based gasoline ~~new~~ sales have passed fossil fuel gas sales  
Electronic + sun powered cars prices have dipped below  
• gasoline cars  
AFFORDABLE TESLA?

Insert Bold Ideas Here



Draw Photo Here

WEDNESDAY, SEPTEMBER 4, 2029 • \$2.00

## KANE COUNTY CHRONICLE

SERVING THE TRI-CITIES AND KANELAND SINCE 1881

KCChronicle.com

BPS101 now 100% Renewable!

Insert Headline Here



Draw Photo Here

"Bye Bye Carbon!"

Insert Sub-Heading Here



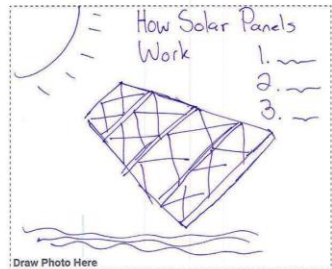
All schools are now equipped with solar panel roofing, providing enough energy to power all schools.

The price of solar energy has consistently been decreasing since 2015.

The solar panels are so efficient that any excess energy can be sold back to the electric company. The district will make money with this deal.

The panel set-up will allow the district to track peak usage times across the district.

Insert Bold Ideas Here



Draw Photo Here





# VALUES: Stakeholder Group Themes



## ❖ Students:

- Behavior Modification
- Life Cycle Cost
- Energy/Carbon

## ❖ Staff/Admin:

- Outdoor Biophilia
- Indoor Biophilia
- Energy

## ❖ Community/Business Partners:

- Building Materials Performance
- Risk Adaptation & Mitigation
- Energy





**Building Our Future  
TOGETHER**

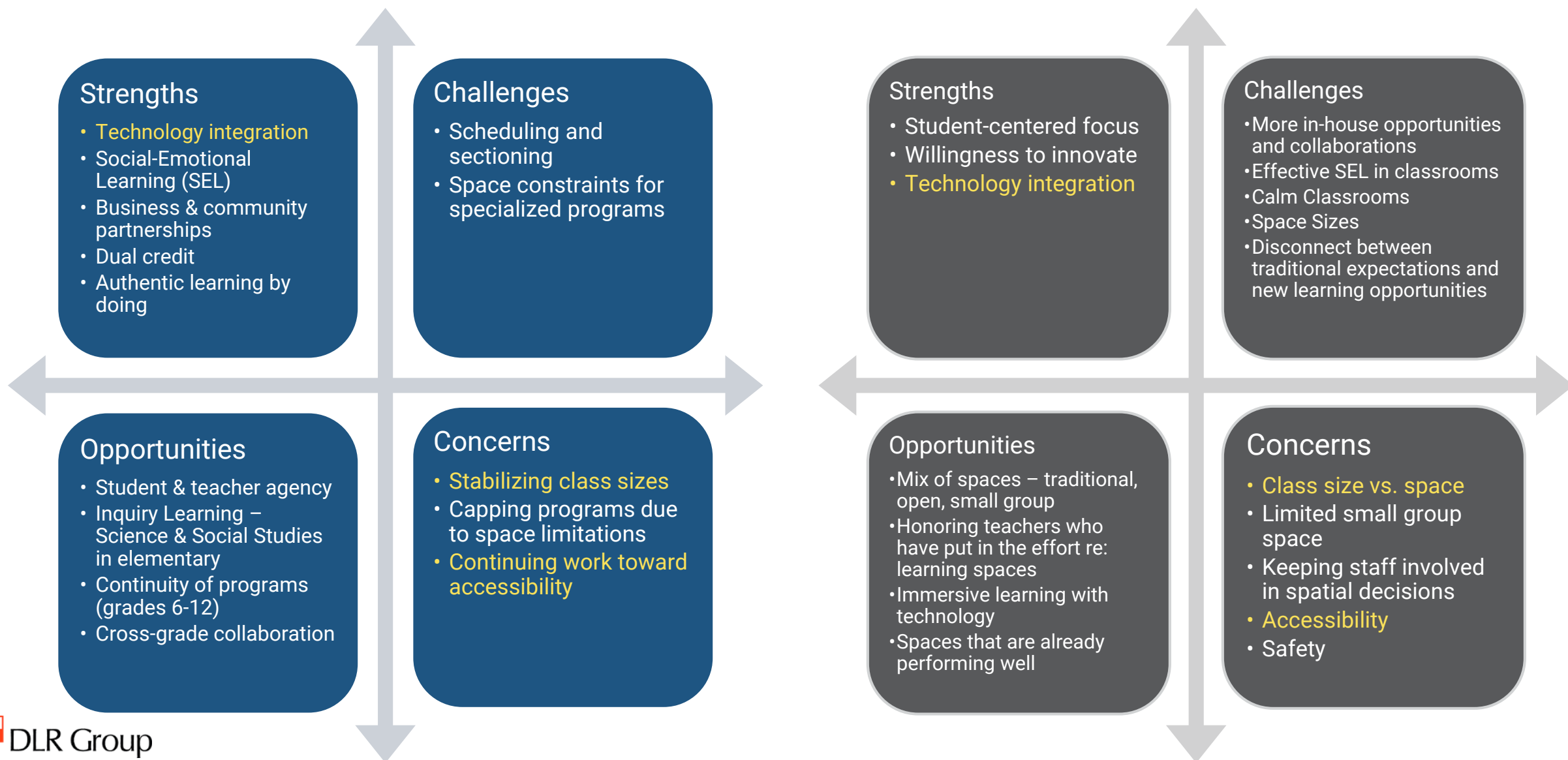


# Curriculum & Instruction Workshops

September 10 & 13, 2019

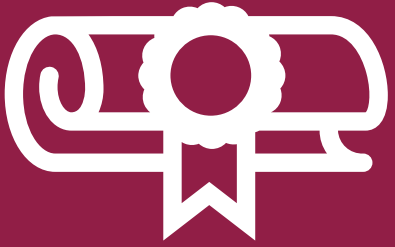


# SWOT Analysis: District | C&I





# Student Pathways Activity



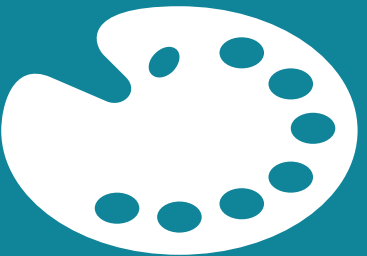
## Students Heading to College/University

- Academic achiever with high anxiety
- Driven to succeed but needs support and guidance



## Students Starting in Workforce

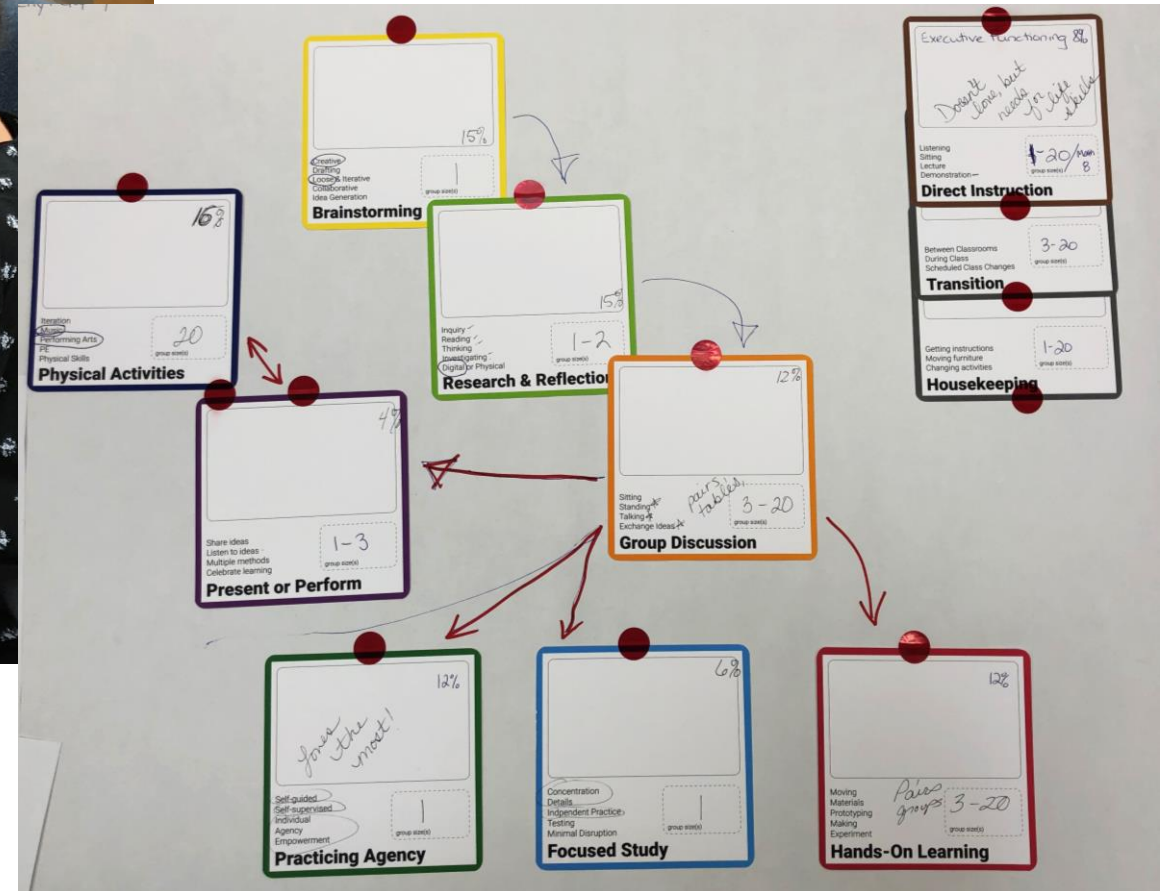
- Entering the family business
- Graduation with a certification in a trade



## Students on Unique Paths

- Entrepreneurs and freelance soloists
- Gap year service programs

# A Day in the Life





# Cultural Continuum Elementary School

CURRENT PRACTICES (avg)  FUTURE PRACTICES (avg)

EMPHASIZING

LEANING

BALANCING

LEANING

EMPHASIZING

TRADITIONAL

INNOVATIVE

STATIC

FLEXIBLE

COHORT-BASED

PERSONALIZED

IN THE SCHOOL

IN THE  
COMMUNITY

OPEN

CLOSED

INFORMAL

FORMAL

DIRECTED

INDEPENDENT

STUDENT-LED

INSTRUCTOR-LED

IN PERSON

VIRTUAL

GROUP  
ACHIEVEMENT

INDIVIDUAL  
ACHIEVEMENT

OWNED

SHARED



# Cultural Continuum Middle School

CURRENT PRACTICES (avg)  FUTURE PRACTICES (avg)

EMPHASIZING

LEANING

BALANCING

LEANING

EMPHASIZING

TRADITIONAL

INNOVATIVE

STATIC

FLEXIBLE

COHORT-BASED

PERSONALIZED

IN THE SCHOOL

IN THE  
COMMUNITY

OPEN

CLOSED

INFORMAL

FORMAL

DIRECTED

INDEPENDENT

STUDENT-LED

INSTRUCTOR-LED

IN PERSON

VIRTUAL

GROUP  
ACHIEVEMENT

INDIVIDUAL  
ACHIEVEMENT

OWNED

SHARED



# Cultural Continuum High School

CURRENT PRACTICES (avg)  FUTURE PRACTICES (avg)

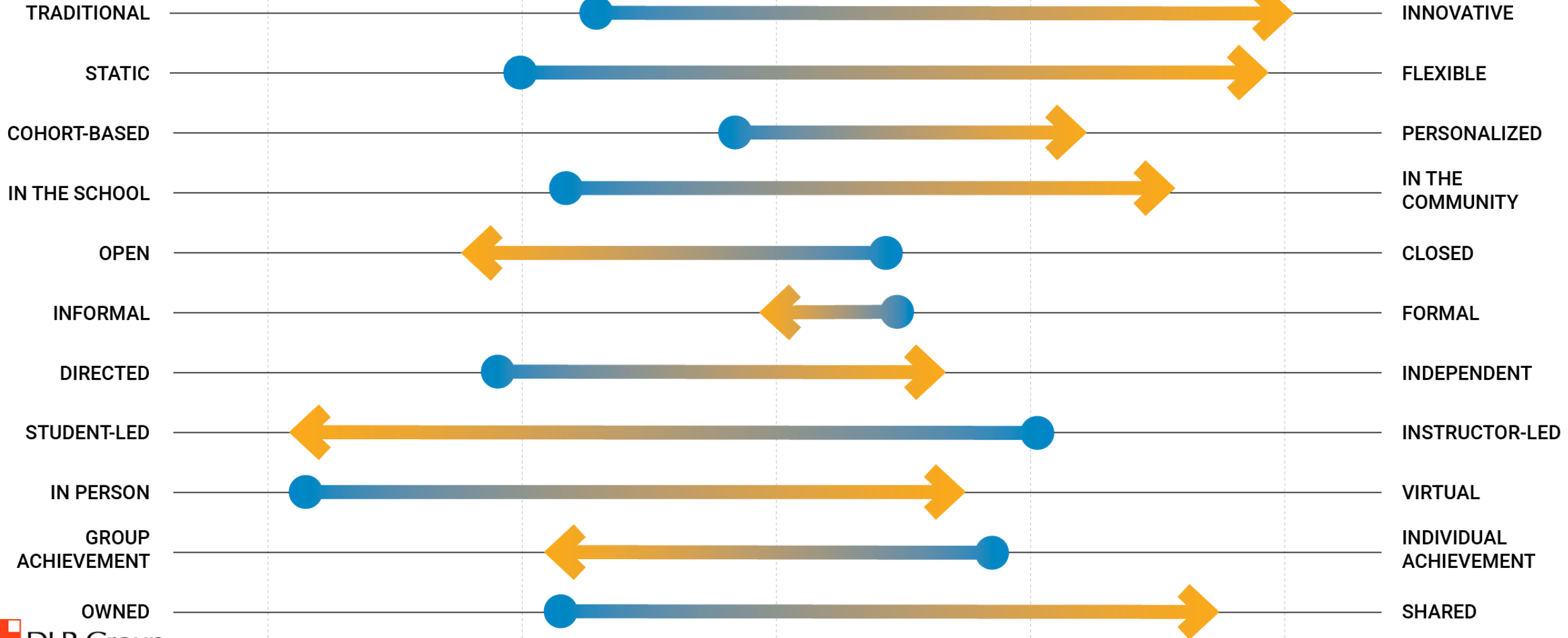
EMPHASIZING

LEANING

BALANCING

LEANING

EMPHASIZING





# Cultural Continuum Students

CURRENT PRACTICES (avg)  FUTURE PRACTICES (avg)

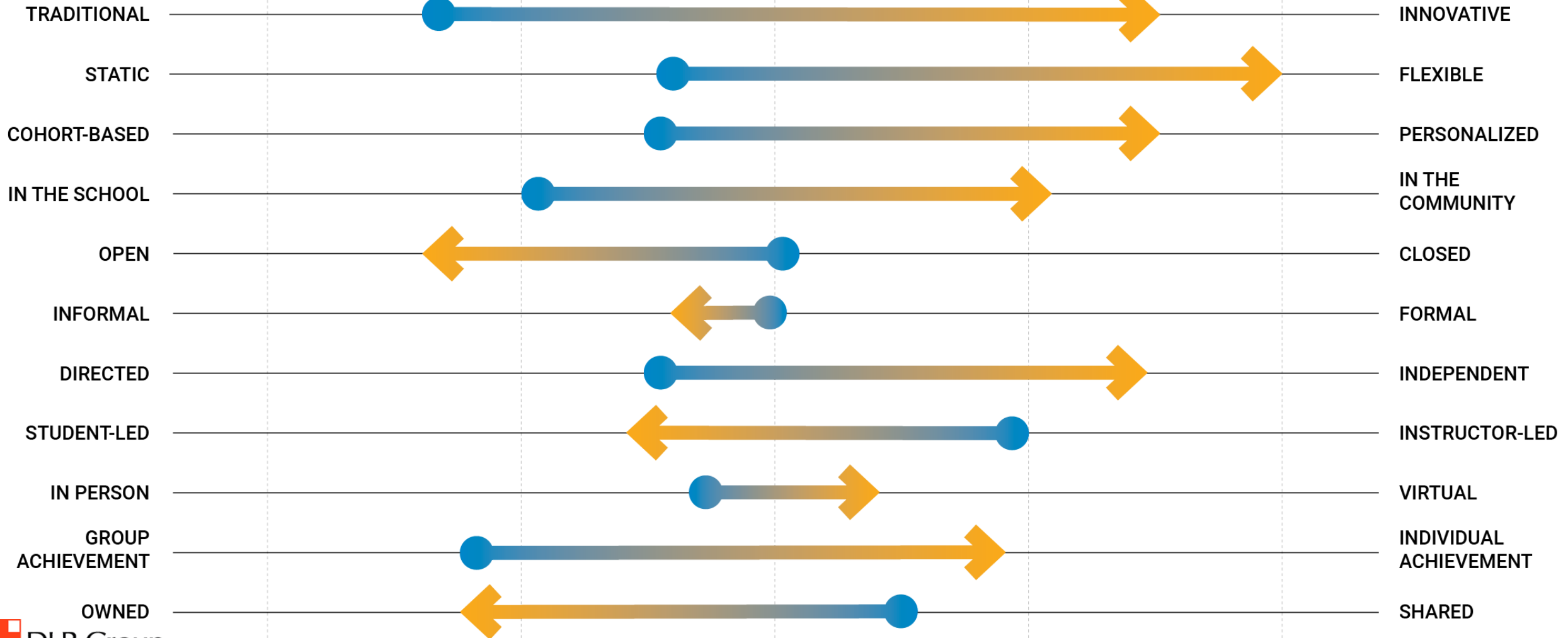
EMPHASIZING

LEANING

BALANCING

LEANING

EMPHASIZING



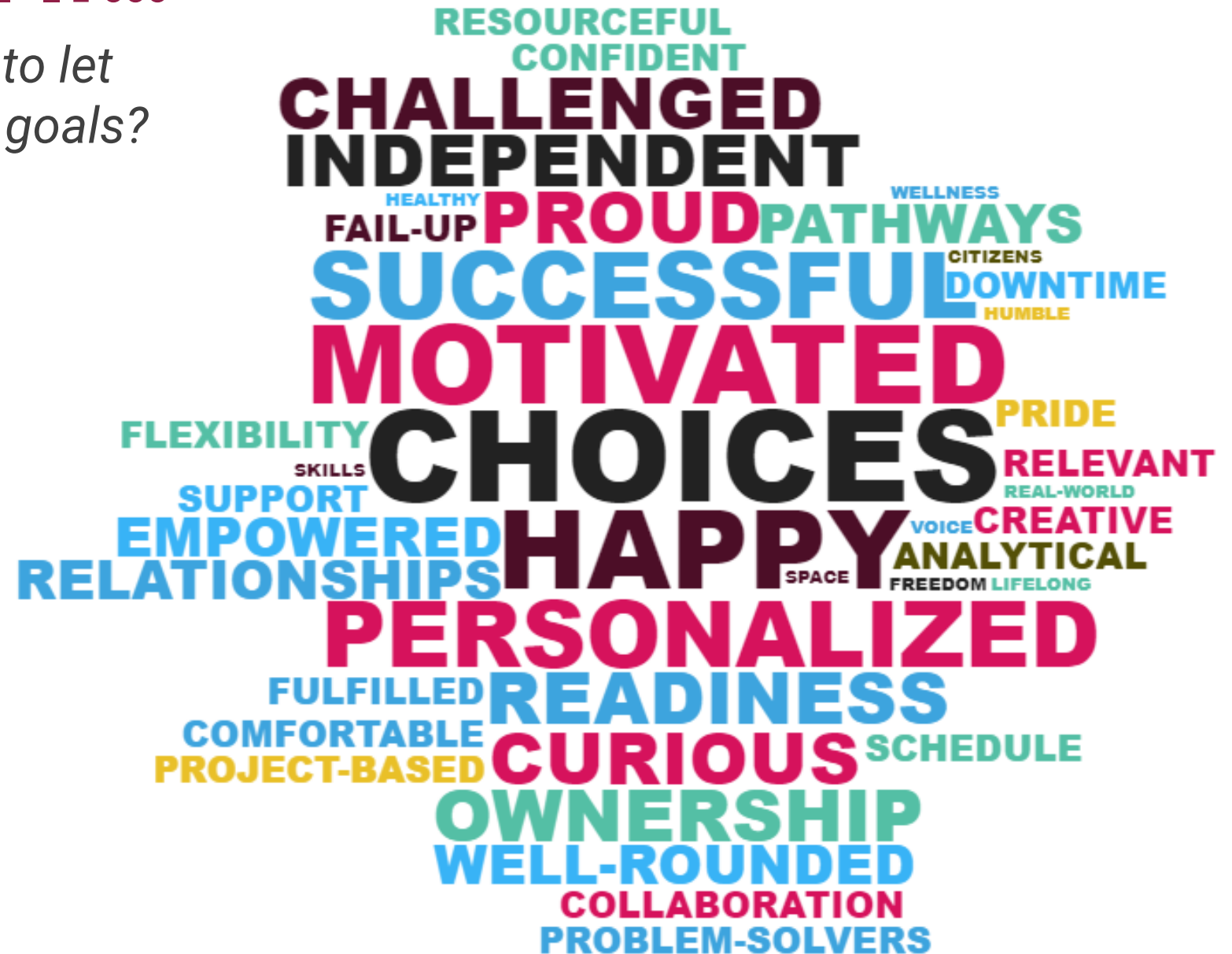




# Successful If...

*What has to happen to let us know we met our goals?*

STUDENTS





# Successful If...

*What has to happen to let us know we met our goals?*

TEACHERS





# Successful If...

*What has to happen to let us know we met our goals?*

COMMUNITY





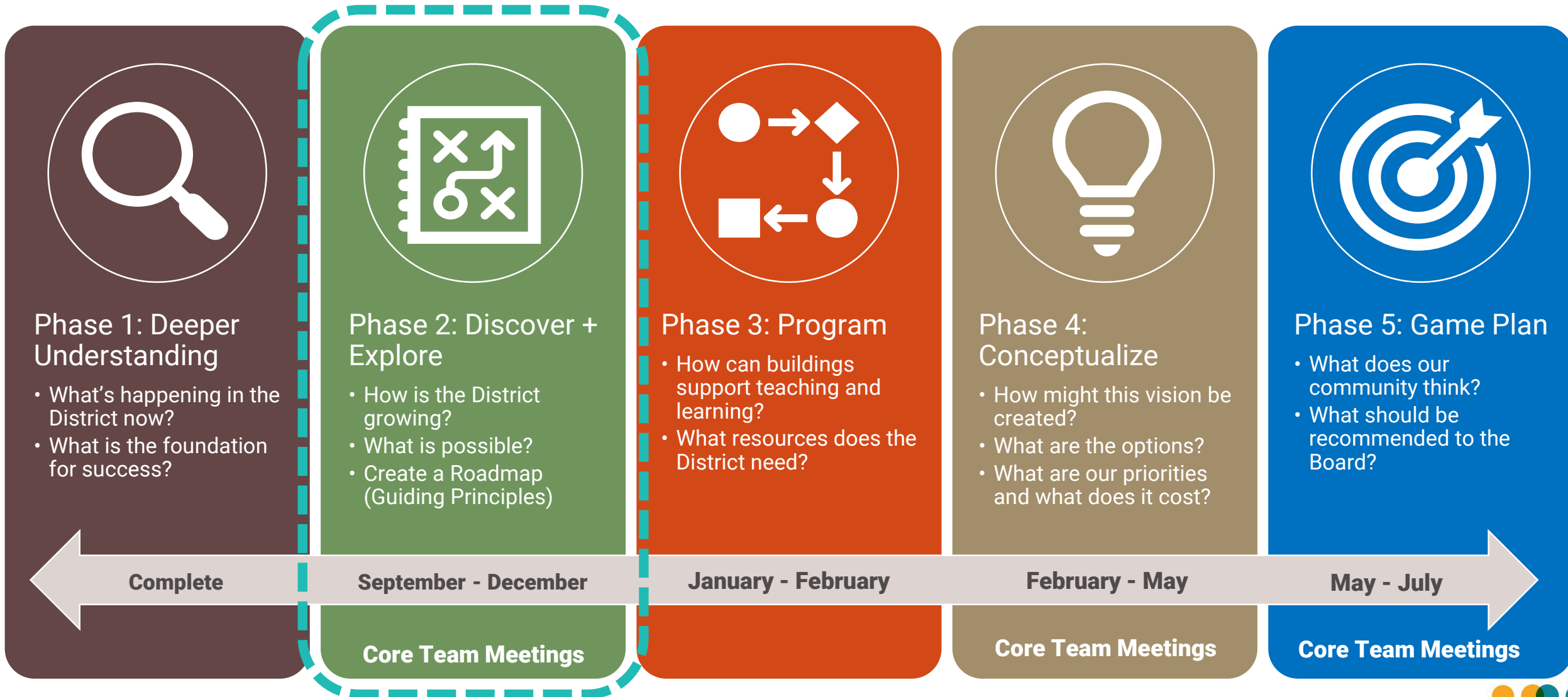
**Building Our Future  
TOGETHER**



# Process Update & Next Steps



# Educational Master Facilities Plan (EMFP) Process





**September 26, 2019 at 6:30 p.m.**  
**Rotolo Middle School**



**Building Our Future  
TOGETHER**



# Questions?