

# Benchmark District Comparisons

2008

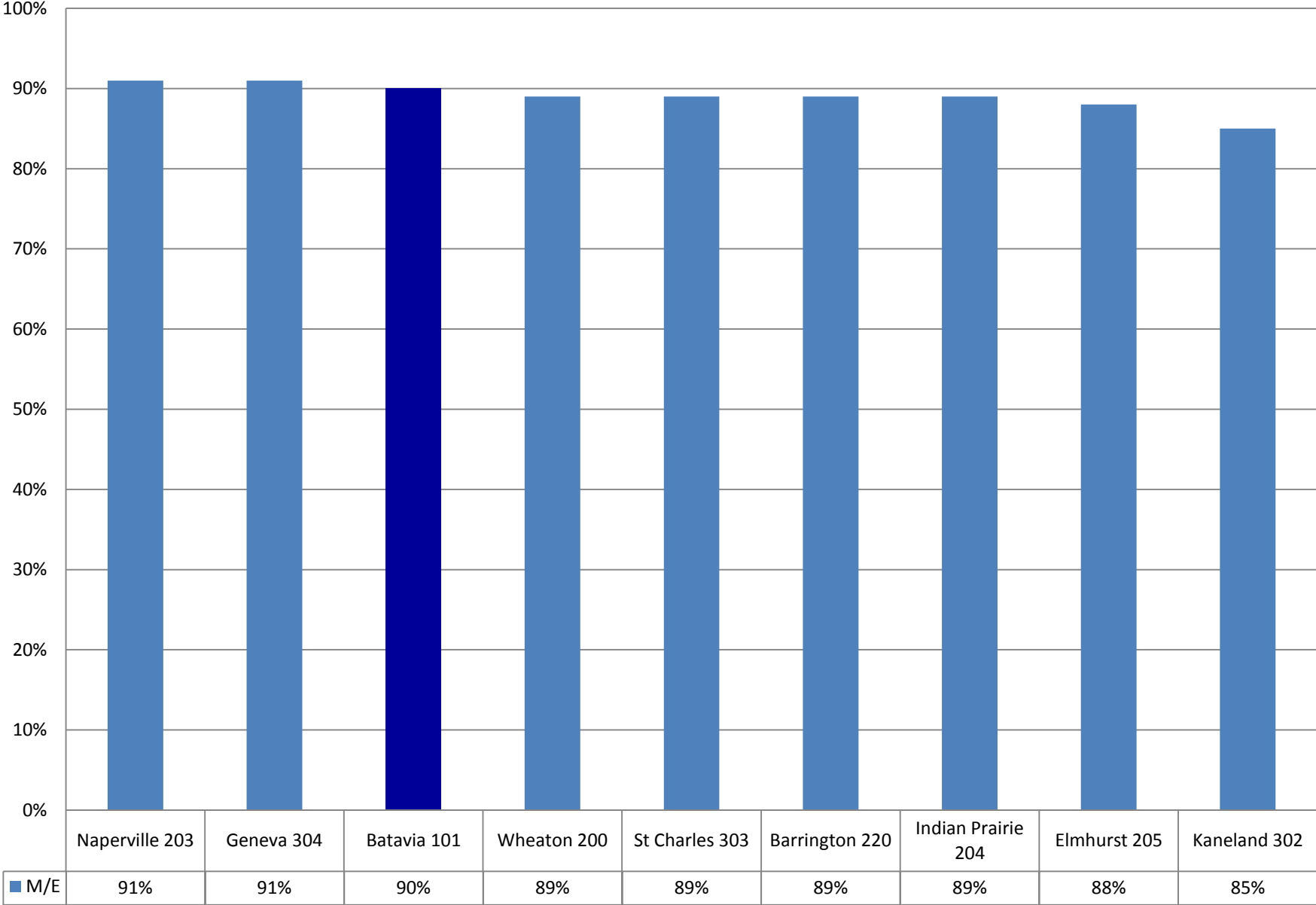
## Kane County Districts

	<b>Batavia 101</b>	<b>Aurora W. 129</b>	<b>Aurora E. 131</b>	<b>Geneva 304</b>	<b>St. Charles 303</b>	<b>Elgin 46</b>	<b>Central 301</b>	<b>Kaneland 302</b>	<b>Dundee 300</b>
Enrollment	6337	12036	13116	5962	13727	40186	3154	4409	18532
White	84%	35%	6%	91%	85%	39%	79%	84%	61%
Black	3%	17%	9%	0%	1%	7%	3%	2%	5%
Hispanic	7%	43%	83%	3%	7%	43%	10%	10%	27%
Asian	3%	2%	1%	2%	4%	8%	5%	2%	5%
Nat. Amer.	0%	0%	0%	0%	0%	0%	0%	0%	0%
Multiracial	3%	2%	2%	3%	2%	3%	3%	2%	2%
Low Income	6%	45%	63%	2%	6%	43%	4%	6%	31%
LEP	3%	12%	35%	1%	2%	18%	3%	3%	13%
Mobility	5%	13%	25%	4%	5%	14%	6%	6%	13%
Per Pupil	\$5,792	\$5,741	\$4,943	\$5,489	\$5,470	\$5,307	\$5,738	\$5,704	\$5,224
EAV Per Pupil	\$179,063	\$140,718	\$69,012	\$218,686	\$228,012	\$134,810	\$160,070	\$171,816	\$171,601
Tax rate	4.7	3.8	3.8	5.0	4.3	4.7	5.5	4.5	3.7
Aver. Teacher Salary	\$67,214	\$64,819	\$52,599	\$65,270	\$62,062	\$65,255	\$61,586	\$54,648	\$58,772

## Benchmark Districts

	<b>Batavia 101</b>	<b>Elmhurst 205</b>	<b>Wheaton 200</b>	<b>Naperville 203</b>	<b>Naperville 204</b>	<b>Barrington 220</b>	<b>Geneva 304</b>	<b>St. Charles 303</b>	<b>Kaneland 302</b>
Enrollment	6337	7757	13421	18211	28437	9095	5962	13727	4409
White	84%	82%	76%	76%	64%	76%	91%	85%	84%
Black	3%	2%	7%	4%	9%	2%	0%	1%	2%
Hispanic	7%	6%	10%	5%	7%	12%	3%	7%	10%
Asian	3%	6%	4%	15%	16%	9%	2%	4%	2%
Nat. Amer.	0%	3%	0%	0%	0%	0%	0%	0%	0%
Multiracial	3%	2%	3%	1%	3%	2%	3%	2%	2%
Low Income	6%	7%	18%	7%	6%	12%	2%	6%	6%
LEP	3%	3%	7%	3%	4%	5%	1%	2%	3%
Mobility	5%	5%	11%	6%	7%	3%	4%	5%	6%
Per Pupil	\$5,792	\$6,738	\$6,445	\$6,332	\$5,749	\$6,749	\$5,489	\$5,470	\$5,704
EAV Per Pupil	\$179,063	\$274,097	\$209,920	\$227,963	\$164,876	\$345,911	\$218,686	\$228,012	\$171,816
Tax rate	4.7	3.4	4.1	4.4	5.0	3.4	5.0	4.3	4.5
Aver. Teacher Salary	\$67,214	\$68,538	\$68,234	\$75,112	\$63,240	\$67,570	\$65,270	\$62,062	\$54,648

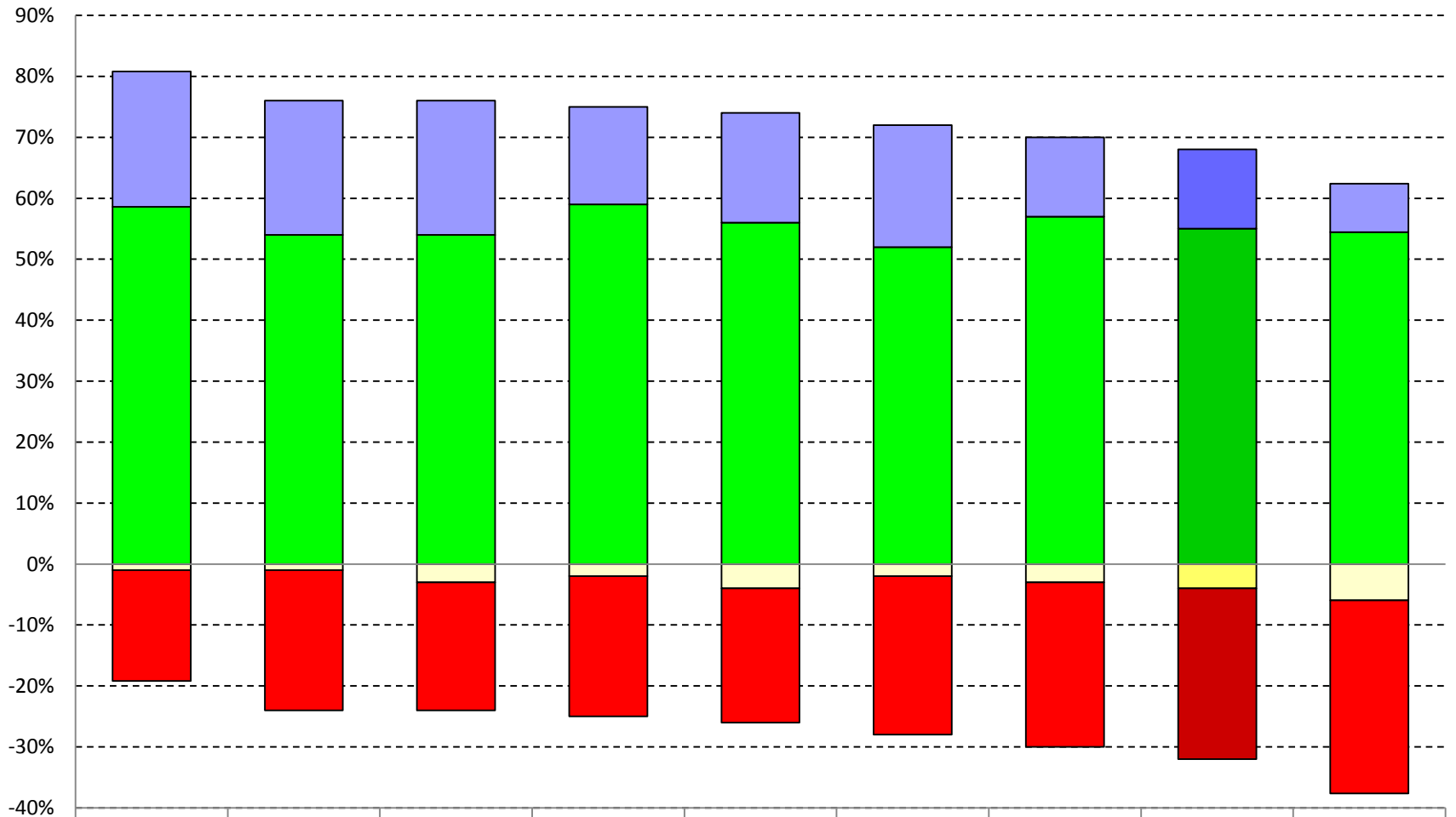
# All Subjects - Percent Meets/Exceeds Standards







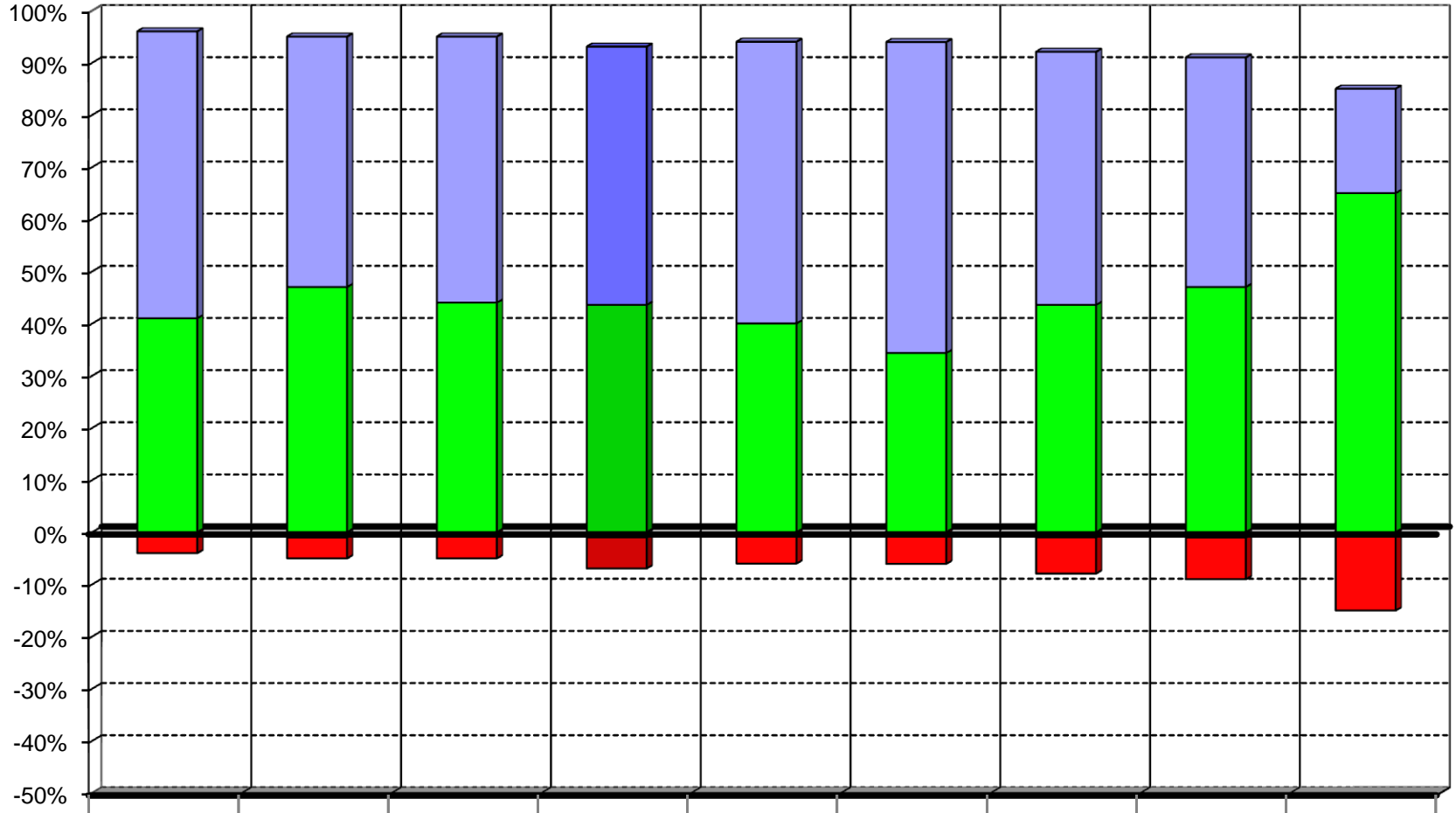
## Grade 5 - Writing



	Geneva 304	Barrington 220	Indian Prairie 204	Wheaton 200	Elmhurst 205	Naperville 203	St Charles 303	Batavia 101	Kaneland 302
Exceeds	22	22	22	16	18	20	13	13	8
Meets	58	54	54	59	56	52	57	55	55
Below	-18	-23	-21	-23	-22	-26	-27	-28	-32
Ac. Warn	-1	-1	-3	-2	-4	-2	-3	-4	-6

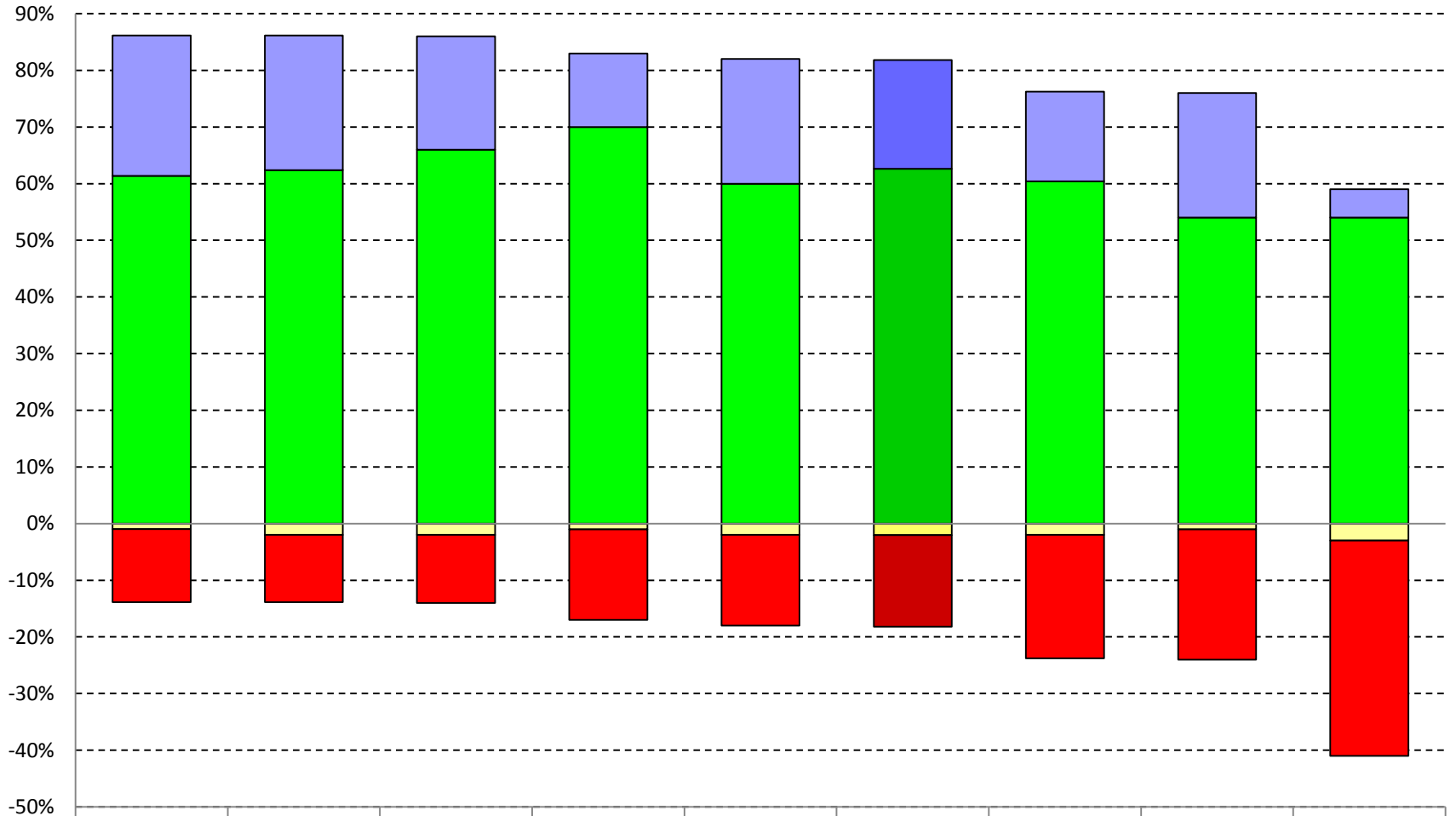


## Grade 8 - Mathematics



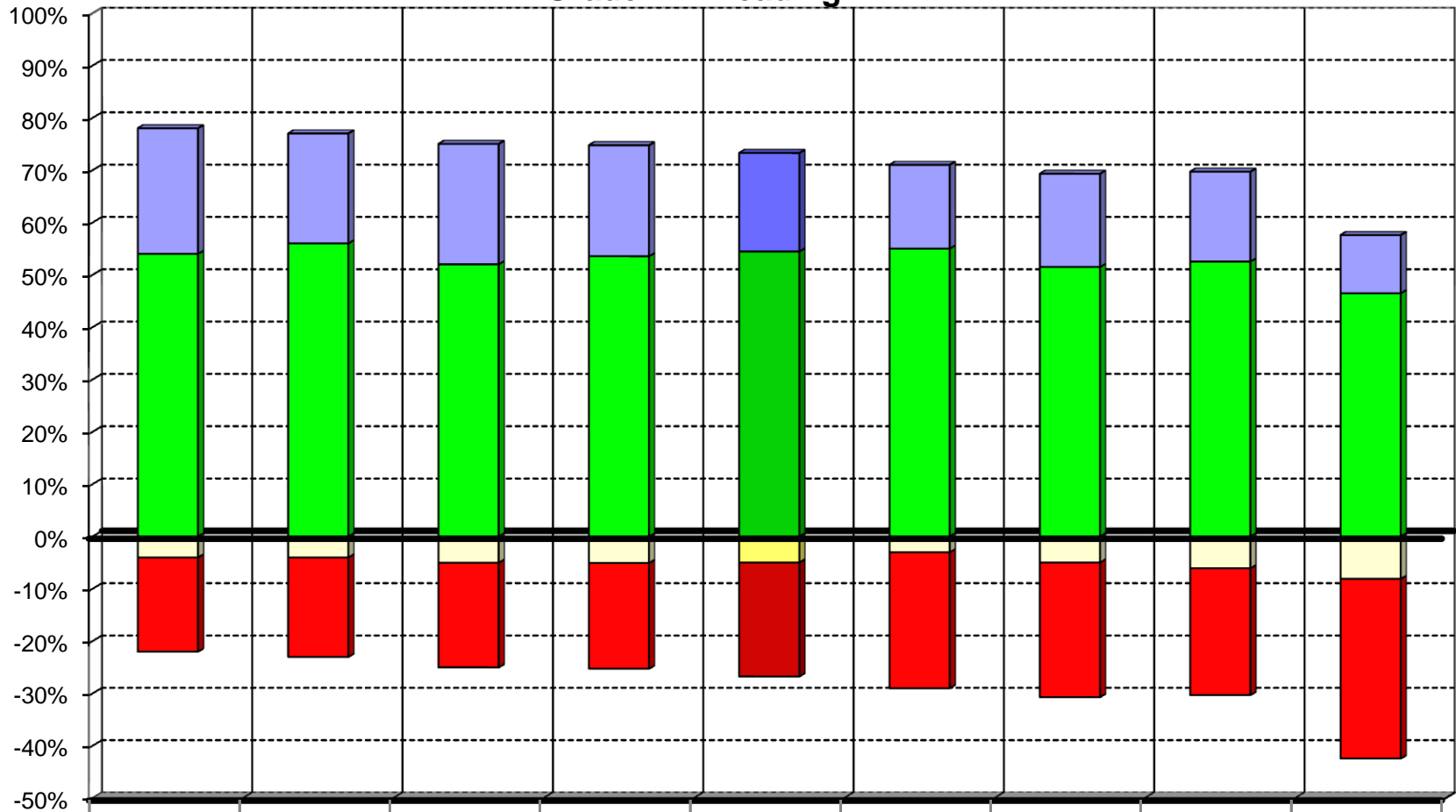
	Naperville	Geneva 304	Wheaton	Batavia 101	St Charles	Barrington	Indian Prairie	Elmhurst	Kaneland
Exceeds	203	48	200	50	303	230	192	205	302
Meets	41	47	44	44	40	34	44	47	65
Below	-4	-4	-5	-6	-6	-6	-7	-8	-15
Ac. Warn	0	-1	0	-1	0	0	-1	-1	0

# Grade 8 - Writing



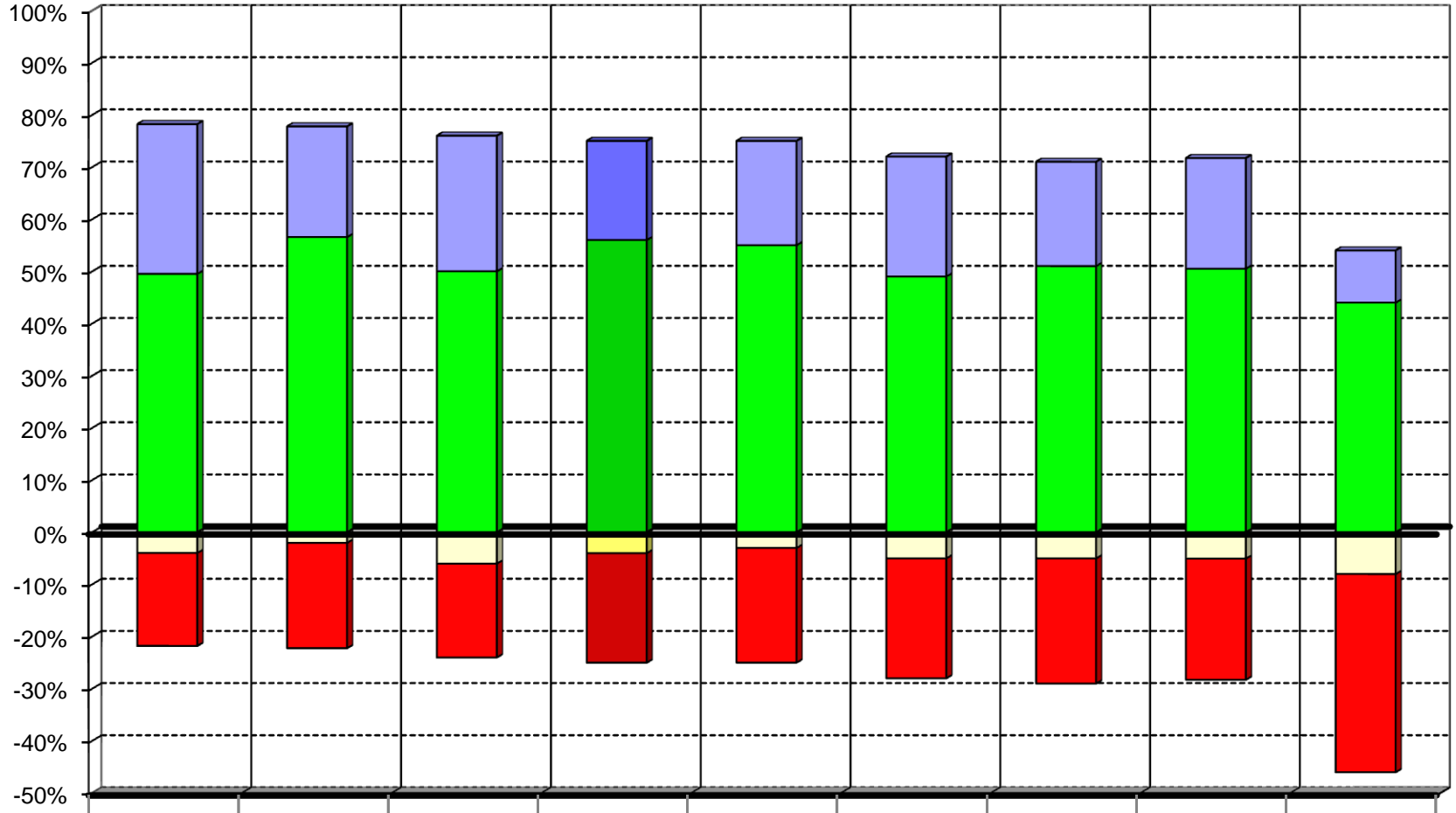
	Naperville 203	St Charles 303	Indian Prairie 204	Geneva 304	Wheaton 200	Batavia 101	Elmhurst 205	Barrington 220	Kaneland 302
Exceeds	25	24	20	13	22	19	16	22	5
Meets	62	63	66	70	60	62	61	54	54
Below	-13	-12	-12	-16	-16	-16	-22	-23	-38
Ac. Warn	-1	-2	-2	-1	-2	-2	-2	-1	-3

## Grade 11 - Reading



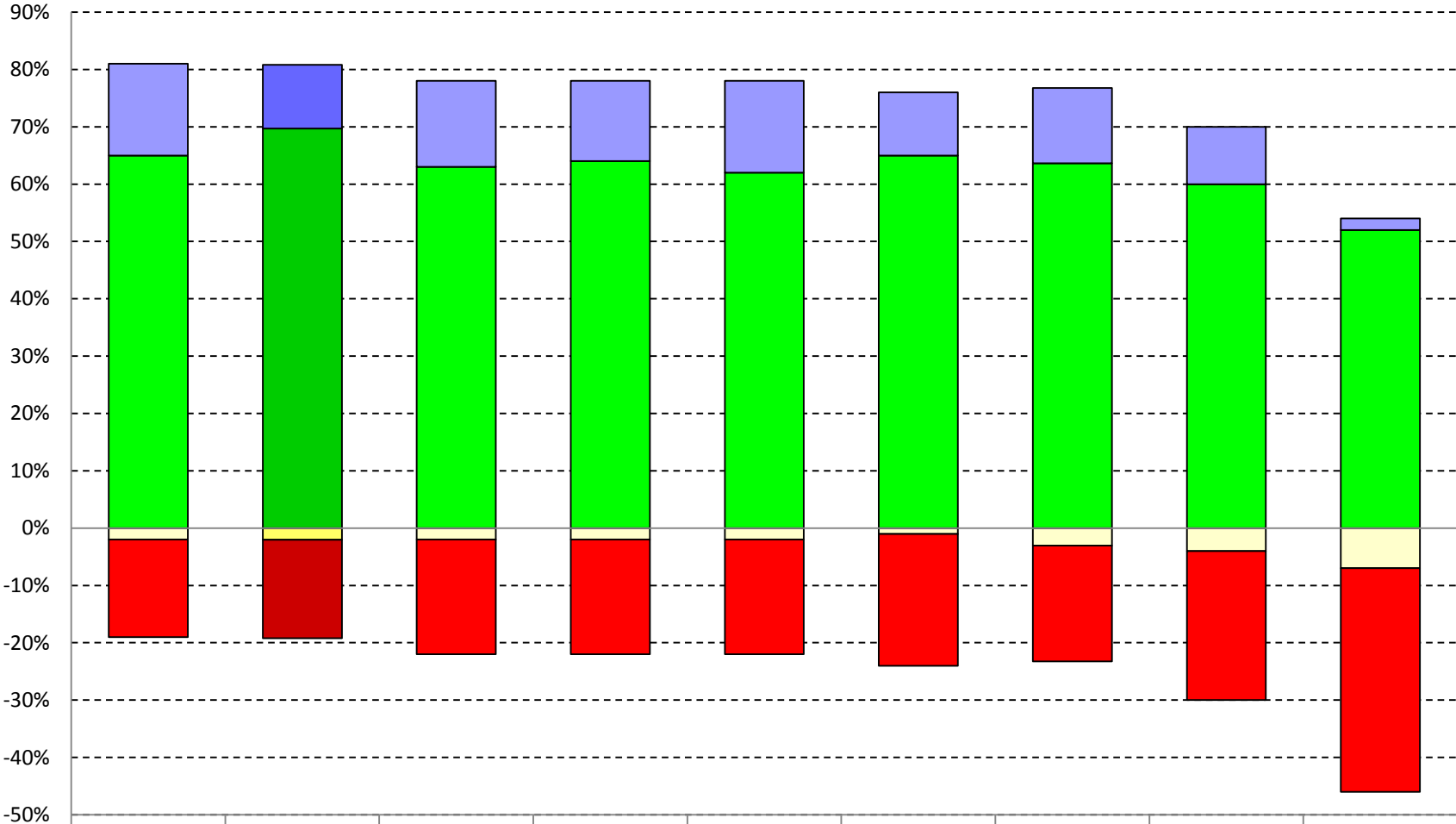
	Naperville	Geneva 304	Wheaton	Barrington	Batavia 101	St Charles	Indian Prairie 204	Elmhurst	Kaneland
Exceeds	24	21	23	21	19	16	18	17	11
Meets	54	56	52	53	55	55	52	52	46
Below	-18	-19	-20	-20	-22	-26	-26	-24	-34
Ac. Warn	-4	-4	-5	-5	-5	-3	-5	-6	-8

## Grade 11 - Mathematics



	Naperville	St Charles	Barrington	Batavia 101	Geneva 304	Wheaton	Indian Prairie	Elmhurst	Kaneland
■ Exceeds	29	22	26	19	20	23	21	22	10
■ Meets	50	56	50	56	55	49	51	50	44
■ Below	-18	-20	-18	-21	-22	-23	-24	-23	-38
■ Ac. Warn	-4	-2	-6	-4	-3	-5	-5	-5	-8

# Grade 11 - Writing



	Naperville 203	Batavia 101	Barrington 220	Geneva 304	Indian Prairie 204	St Charles 303	Wheaton 200	Elmhurst 205	Kaneland 302
Exceeds	16	11	15	14	16	11	13	10	2
Meets	65	69	63	64	62	65	63	60	52
Below	-17	-17	-20	-20	-20	-23	-20	-26	-39
Ac. Warn	-2	-2	-2	-2	-2	-1	-3	-4	-7

# Average ACT Composite Score

